

GEFORCE GARAGE
SCRATCH BUILD SERIES

HOW TO APPLY THREE BASIC FINISHES TO METAL SURFACES

FEATURING
ROD ROSENBERG, BSMODS.COM



In this video, Rod Rosenberg walks you through three metal finishing techniques that belong in every modder's repertoire. They're easy, they're inexpensive, they don't require much more than what you've already got around the house and man, they look *fantastic*.

Keep in mind that these techniques aren't just for case panels, either. They can also turn front panels, badges, logos, and trim into one-of-a-kind mods for your rig!

That said, these techniques do kick up a lot of dust, so they're best done in a room with plenty of ventilation. And be careful with the hammers—they hurt.

LEVEL: MASTER

TIME: AN HOUR OR TWO

COST: \$\$\$

TOOLS:

6 oz. ball peen hammer

8 oz. ball peen hammer

Drill with cloth polishing wheel

MATERIALS:

Sandpaper

Polishing compound

Scotch Brite pads



STEP 1:

Prep the surface

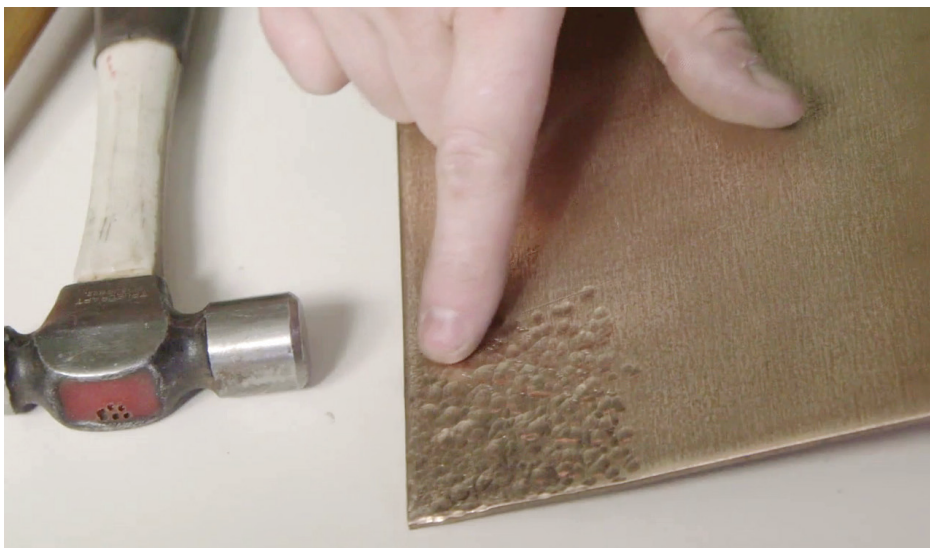
Lightly sand the surface of your metal with fine-grit sandpaper. This cleans your surface and gives it a smooth, matte finish.



STEP 2:

Hammer time

Begin with the larger 8 oz. hammer. Use the round peening end to create dimpled craters with plenty of overlap.



STEP 3:

Second pass

Go over the surface again, this time using the smaller 6 oz. hammer to create a more natural, irregular pattern.

STEP 1:

First pass: 600 grit sandpaper

Begin sanding with 600 grit sandpaper until you've removed the blemishes and markups on the metal.

STEP 2:

Second pass: 1000 grit sandpaper

Now go over the surface again, this time with 1000 grit sandpaper. You'll be removing all the sanding marks from the first pass.

STEP 3:

Third pass: 2000 grit sandpaper

The third pass with 2000 grit sandpaper polishes away the fine abrasions from the second pass.





STEP 4:

Apply compound to polisher

Press the cloth polishing head to the compound and give it a few spins until it's thoroughly covered.



STEP 5:

Polish your surface

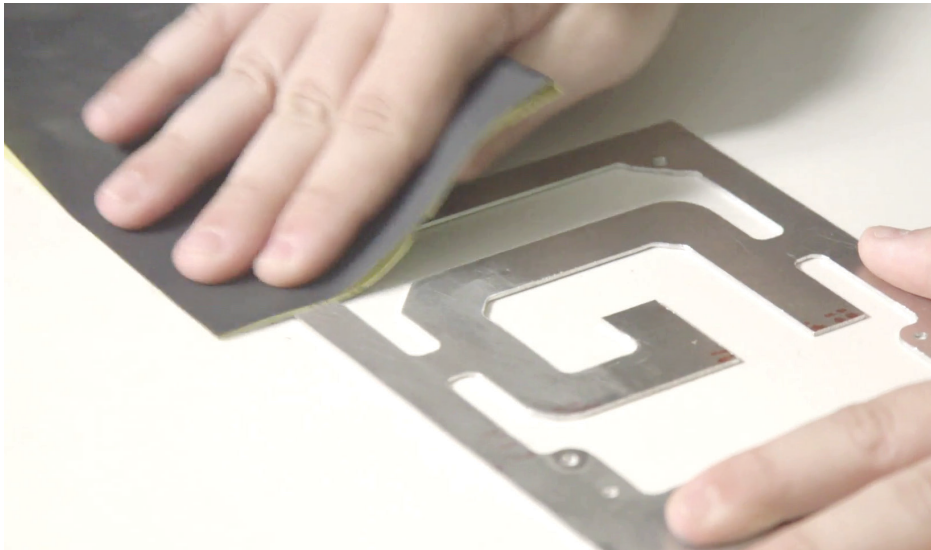
Apply the compound to the metal in smooth, back and forth passes, reloading your compound as needed.



STEP 6:

Wipe off compound

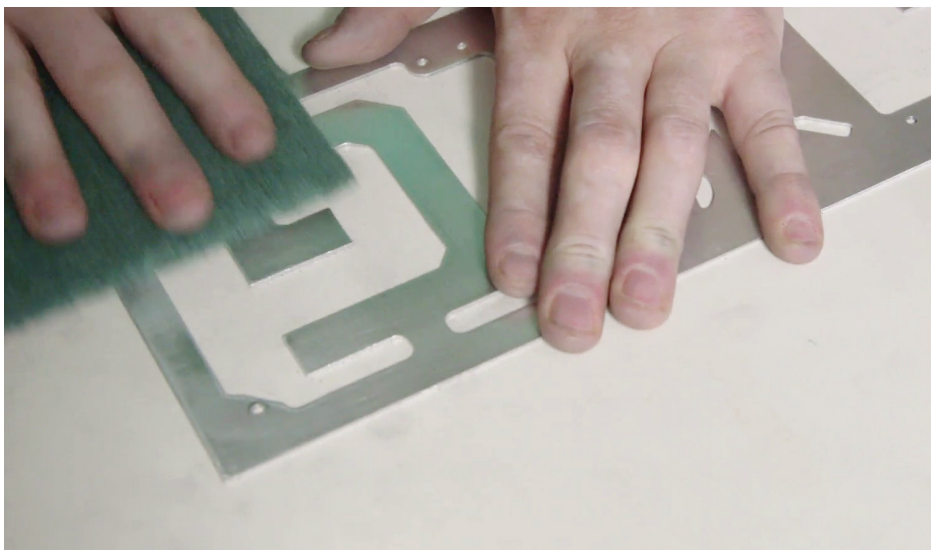
When your surface looks nice and shiny, wipe off the compound for the full effect. Repeat the process for any dull or missed spots.



STEP 1:

Sand the surface

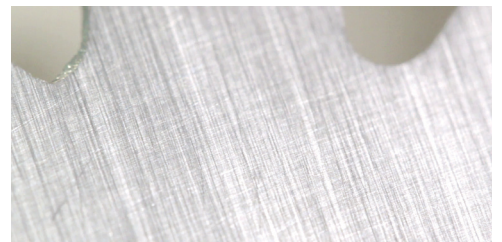
Go over the surface thoroughly with 600 grit sandpaper to smooth out burrs and sharp edges. You can also apply the metal to the sandpaper, if that's easier.



STEP 2:

Texture with Scotch Brite

Press firmly with the Scotch Brite pad in smooth strokes perpendicular to the aluminum grain until your texture emerges.



GeForce Garage: Scratch Build Series

SPECIAL THANKS TO:



TOSHIBA

